

CLADOGRAM AND CLASSIFICATION PRACTICE

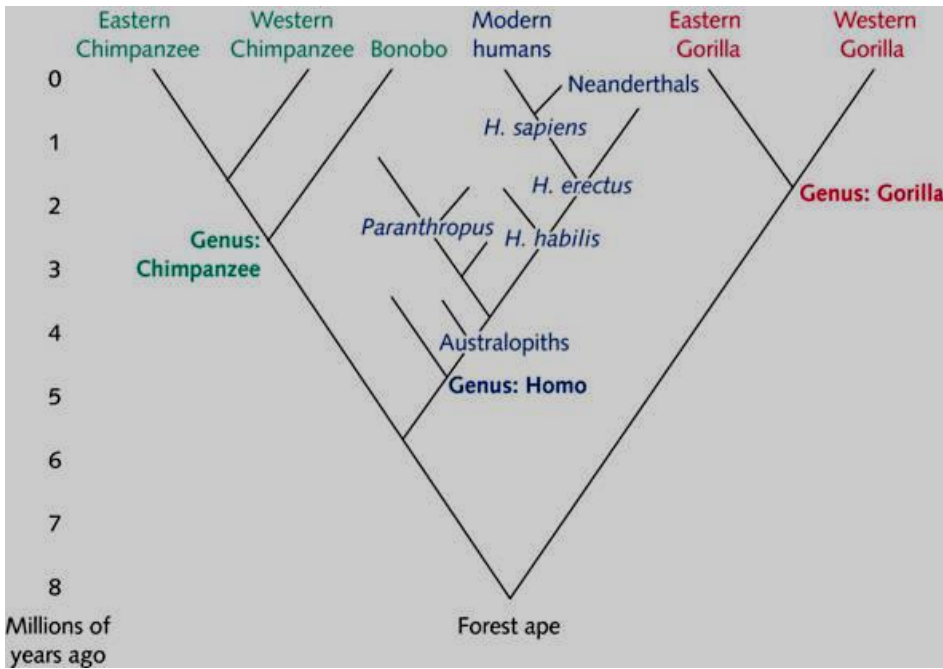
HINT: To write a genus and species name correctly, use a capital letter for the first word and lowercase for the second word. Underline both words. Example: Carthidea olivacea

GALAPAGOS FINCH CLADOGRAM

1. What is the genus and species name for the Vegetarian finch?
2. What is the genus and species name for the Medium ground finch?
3. What genus is the most closely related to the Woodpecker finch?
4. At a point in evolutionary time, finches branched from the common ancestor into what three genera?
 - 1.
 - 2.
 - 3.
5. The warbler finch (*C. olivacea*) is the least closely related to what species?
6. What two species of finches are cactus flower eaters?
 1. _____
 2. _____
7. What would the large ground finch eat?
8. The Mangrove finch?
9. In which direction does time pass? (circle 1: top to bottom/ bottom to top)

FRUIT FLY CLADOGRAM

10. From what genus are all fruit flies derived?
11. To what subgroup does the Drosophila simulans belong?
12. What is the closest relative to Drosophila mojavensis?
13. The melanogaster subgroup began its evolution during what time period?
14. Which genus of fruit fly has the smallest body size?
15. Which group of fruit fly evolved from Drosophila first?

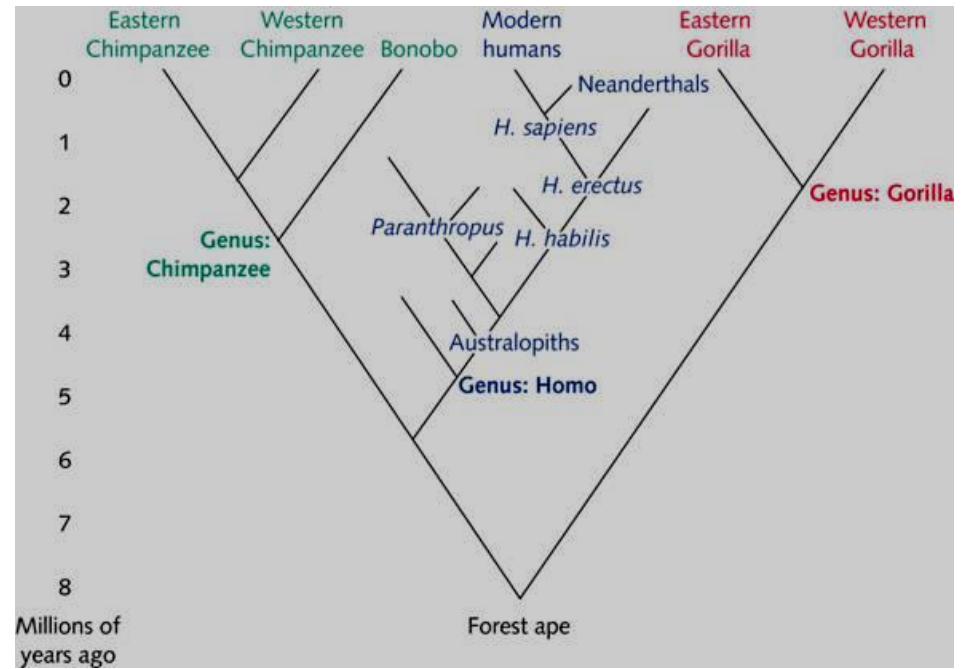


PRIMATE EVOLUTION CLADOGRAM:

16. From which genus did the Bonobo evolve?
17. What are the genus and species names of modern humans?
18. What is most closely related to the Eastern gorilla?
19. From which genus did the Australopiths evolve?
20. For how many years have scientists had evidence of evolution of chimpanzees?

SPECIATION REVIEW: behavioral isolation- two populations that have different mating or other behavior rituals that isolates them from reproducing with another similar species, b) **geographic isolation-** two populations that are separated by geographic barriers such as rivers, mountains, or water, and are unable to reproduce, or c) **temporal isolation-** two or more species whose mating seasons occur at different times and therefore cannot reproduce with each other.

Over time, what will happen if two species are reproductively isolated and can no longer reproduce with each other?



PRIMATE EVOLUTION CLADOGRAM:

21. From which genus did the Bonobo evolve?
22. What are the genus and species names of modern humans?
23. What is most closely related to the Eastern gorilla?
24. From which genus did the Australopiths evolve?
25. For how many years have scientists had evidence of evolution of chimpanzees?

SPECIATION REVIEW: behavioral isolation- two populations that have different mating or other behavior rituals that isolates them from reproducing with another similar species, b) **geographic isolation-** two populations that are separated by geographic barriers such as rivers, mountains, or water, and are unable to reproduce, or c) **temporal isolation-** two or more species whose mating seasons occur at different times and therefore cannot reproduce with each other.

Over time, what will happen if two species are reproductively isolated and can no longer reproduce with each other?
