

Cell Transport

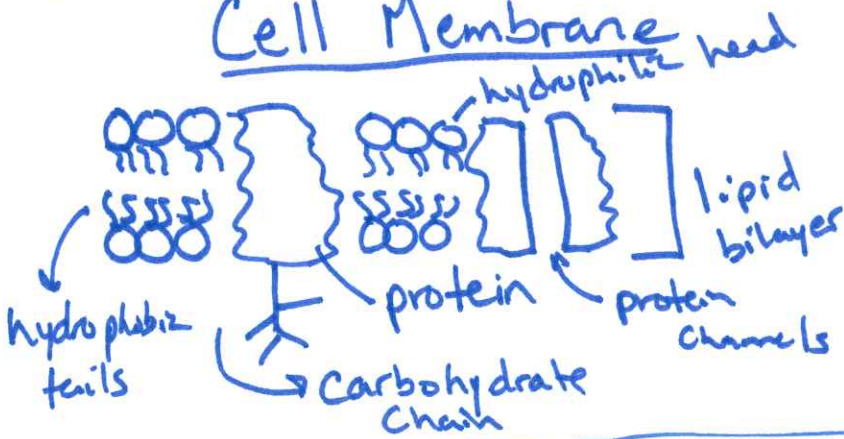
7.3

1. Passive

2. Active

3. Labeling / Structure

Cell Membrane



* Semi-permeable

* fluid mosaic

Passive (no E)

Simple \uparrow to \downarrow

Facilitated \uparrow to \downarrow
thru a protein channel

Osmosis $H_2O \uparrow$ to \downarrow

Active (E!)

* ATP

- Protein Pumps
- Endo/cyto cytolysis

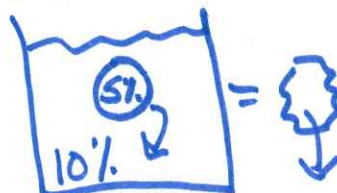
from \downarrow to \uparrow

Tonicity

Iso - Equal



Hyper - Above



Hypo - Below

