



Name \_\_\_\_\_ Per: \_\_\_\_\_

### Cell Structure Research Sheet

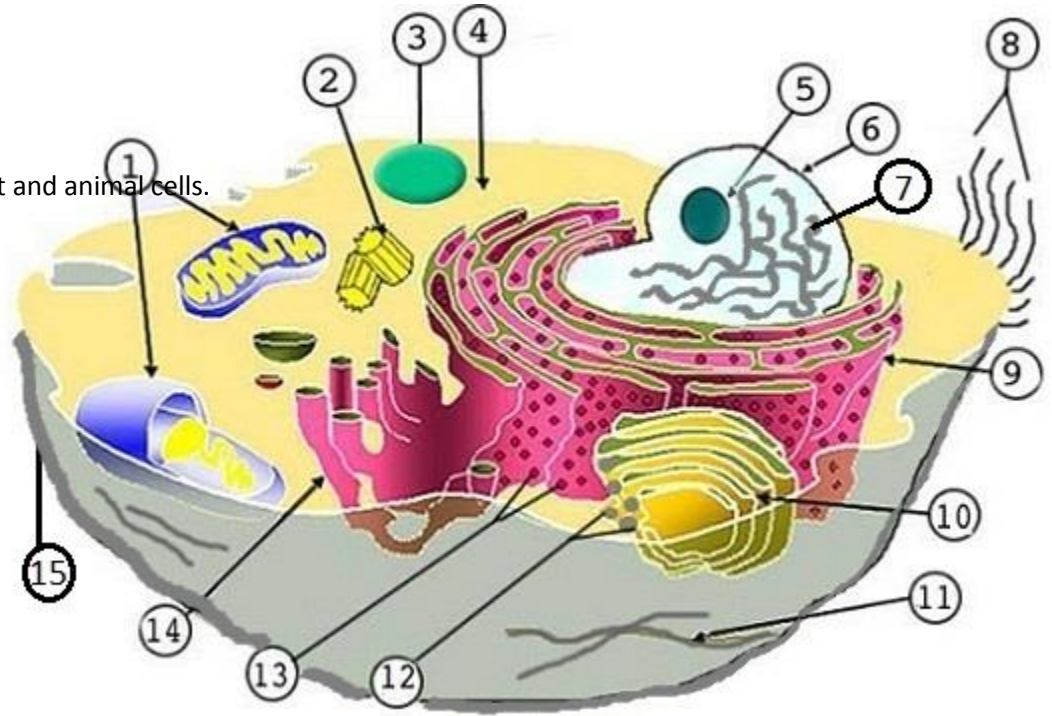
<b>Organelle</b>	<b>Nucleus</b>
What does it do in the cell?	
Something that performs the same function in a school.	
<b>Organelle</b>	<b>Cytoplasm</b>
What does it do in the cell?	
Something that performs the same function in a school.	
<b>Organelle</b>	<b>Vacuole</b>
What does it do in the cell?	
Something that performs the same function in a school.	
<b>Organelle</b>	<b>Lysosome</b>
What does it do in the cell?	
Something that performs the same function in a school.	
<b>Organelle</b>	<b>Plasma Membrane</b>
What does it do in the cell?	
Something that performs the same function in a school.	
<b>Organelle</b>	<b>Ribosome</b>
What does it do in the cell?	
Something that performs the same function in a school.	
<b>Organelle</b>	<b>Endoplasmic Reticulum</b>
What does it do in the cell?	
Something that performs the same function in a school.	
<b>Organelle</b>	<b>Golgi Apparatus</b>
What does it do in the cell?	
Something that performs the same function in a school.	
<b>Organelle</b>	<b>Mitochondria</b>
What does it do in the cell?	
Something that performs the same function in a school.	



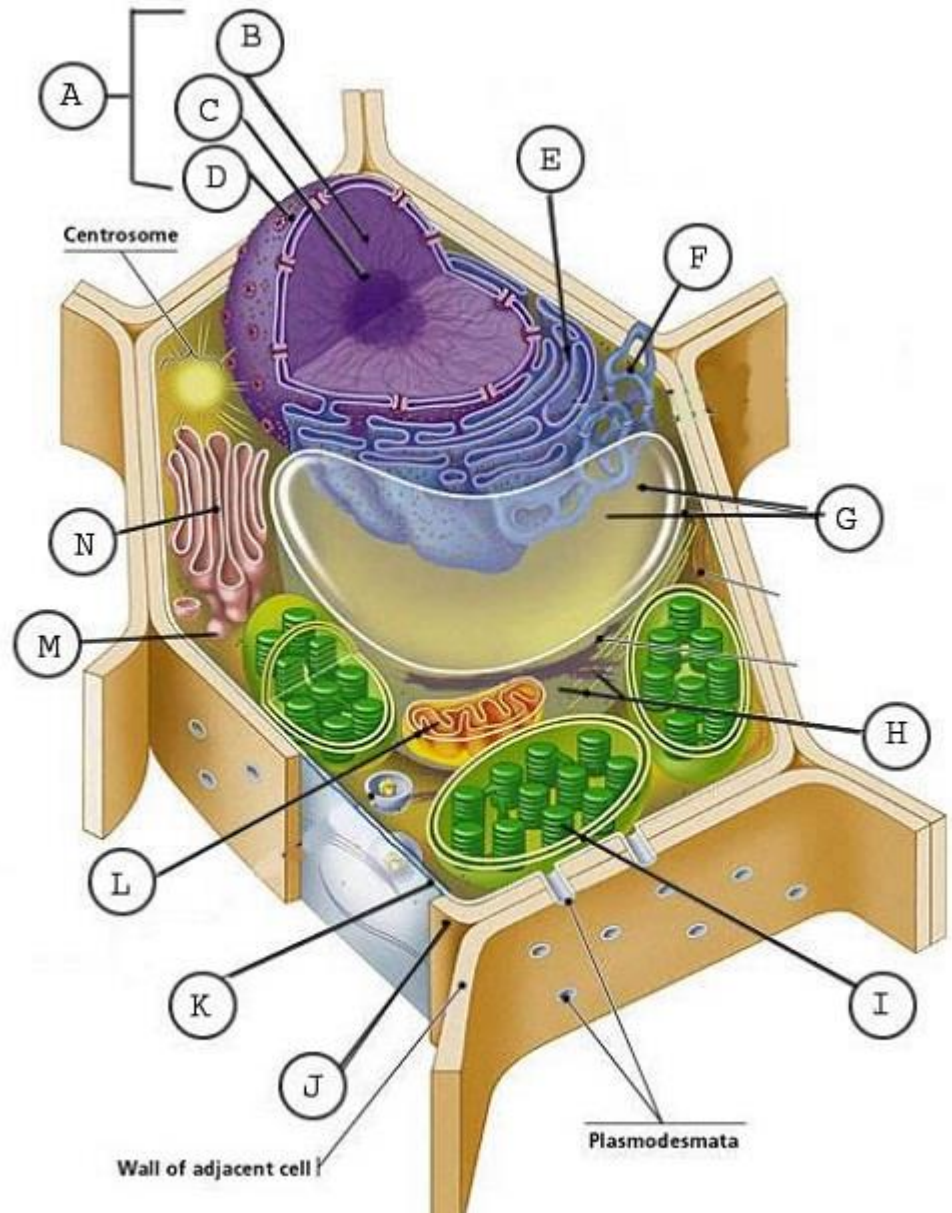
Name \_\_\_\_\_ Per: \_\_\_\_\_

**7.2 Cell Organelle Labeling**

Label the identified parts of the plant and animal cells.



1. \_\_\_\_\_
2. \_\_\_\_\_
3. \_\_\_\_\_
4. \_\_\_\_\_
5. \_\_\_\_\_
6. \_\_\_\_\_
7. \_\_\_\_\_
8. \_\_\_\_\_
9. \_\_\_\_\_
10. \_\_\_\_\_
11. \_\_\_\_\_
12. \_\_\_\_\_
13. \_\_\_\_\_
14. \_\_\_\_\_
15. \_\_\_\_\_



- A. \_\_\_\_\_
- B. \_\_\_\_\_
- C. \_\_\_\_\_
- D. \_\_\_\_\_
- E. \_\_\_\_\_
- F. \_\_\_\_\_
- G. \_\_\_\_\_
- H. \_\_\_\_\_
- I. \_\_\_\_\_
- J. \_\_\_\_\_
- K. \_\_\_\_\_
- L. \_\_\_\_\_
- M. \_\_\_\_\_
- N. \_\_\_\_\_

Wall of adjacent cell

Plasmodesmata